

**Aviation Fabricators
805 North Fourth Street
Clinton MO 64735**

Document No: AF-620
Revision: (IR)
Date: October 21, 2015

INSTRUCTIONS FOR CONTINUED AIRWORTHINESS

For

Aft Pocket Door Dividers Installation

Document No.: AF-620

Revision "IR"

Revision Date: 10/21/15

Applicable to:

**Cessna 550 Aircraft
S/N's 0002 THRU 0505**

Modified by FAA STC ST01475WI

The information in the Instruction for Continued Airworthiness is FAA accepted material and complies with 14 CFR 23.1529, Instructions for Continued Airworthiness. It supersedes or adds to that provided in the Maintenance Manual for the Cessna 550 Series Aircraft, only where covered in the items contained herein. For limitations and procedures not contained in the Supplement, consult the Component Maintenance Manual, or other approved airplane data.

REVISION PAGE

Document Title: Instructions for Continued Airworthiness

Prepared By: Todd Pogue

Updates to the ICA will be made by Aviation Fabricators Inc. Updates will be listed in the log of revisions and the effective pages will be listed below.

Log of Revisions				
REV. NO.	EFFECTED PAGE(S)	DESCRIPTION	DATE	APPROVED BY
IR	All	Initial Release	10-21-15	JeffreyR. Lowe

Per the requirement of Appendix G of 14 CFR Part 23 paragraph G23.1 (c), the changes made to the ICA by the applicant will be distributed via mail by means of paper copy.

TABLE OF CONTENTS

INSTRUCTIONS FOR CONTINUED AIRWORTHINESS	1
REVISION PAGE	2
TABLE OF CONTENTS	3
1.0 INTRODUCTION	5
2.0 INSPECTION REQUIREMENTS AND OVERHAUL SCHEDULE	9
3.0 DIMENSION AND ACCESS	9
4.0 LIFTING AND SHORING	9
5.0 LEVELING AND WEIGHING	9
6.0 TOWING AND TAXIING	10
7.0 PARKING AND MOORING	10
8.0 PLACARDS AND MARKINGS	10
9.0 SERVICE INFORMATION	11
10.0 AIRWORTHINESS LIMITATIONS	12
11.0 TROUBLESHOOTING	12

ABBREVIATIONS AND DEFINITIONS

Abbreviations	Definitions
AML	FAA Approved Model List (AML)
Detailed Inspection (DET)	An intensive examination of a specific item, installation or assembly to detect damage, failure or irregularity. Available lighting is normally supplemented with a direct source of good lighting at an intensity deemed appropriate. Inspection aids such as mirrors, magnifying lenses, etc. may be necessary. Surface cleaning and elaborate access procedures may be required.
FAA	Federal Aviation Administration
FAA MIDO	FAA Manufacturing Inspection District Office
General Visual Inspection (GVI)	A visual examination of an interior or exterior area, installation or assembly to detect obvious damage, failure or irregularity. This level of inspection is made from within touching distance unless otherwise specified. A mirror may be necessary to enhance visual access to all exposed surfaces in the inspection area. This level of inspection is made under normally available lighting conditions such as daylight, hangar lighting, flashlight or droplight and may require removal or opening of access panels or doors. Stands, ladders or platforms may be required to gain proximity to the area being checked.
ICA	Instructions for Continued Airworthiness
Special Detailed Inspection (SDI)	An intensive examination of a specific item, installation , or assembly to detect damage, failure or irregularity. The examination is likely to make extensive use of specialized Inspection Techniques and/or equipment. Intricate cleaning and substantial access or disassembly procedure may be required.
STC	Supplemental Type Certificate

1.0 INTRODUCTION

The purpose of this Maintenance Manual Supplement and Instructions for Continued Airworthiness (ICA) is to provide the maintenance technician with the information necessary to ensure the continued airworthiness of the Aviation Fabricators aft pocket door divider installation, per installation number 42-0341K when installed in accordance with Aviation Fabricators design data included on STC Drawing List AF-375 and per Supplement Type Certificates (STC) ST01475WI.

Modifications to an aircraft obligates the operator to include the maintenance information provided by this document into the operators aircraft Maintenance Manual and operator's aircraft scheduled maintenance program. This document defines supplementary maintenance operations and frequencies recommended by Aviation Fabricators Inc., to ensure the aircraft's airworthiness.

The information contained herein addresses the requirements specified in 14 CFR 23.1529, Instructions for Continued Airworthiness and supplements the basic Airplane Maintenance Manual only in those areas listed as pertains to the installation of the window shade assembly, as installed per the Aviation Fabricator STC Drawing List AF-375. For limitations and procedures not contained in this supplement, consult the basic Airplane Maintenance Manual.

DATA

All information to support the continued airworthiness of this modification is contained in:

STC ST01475WI.
STC Drawing List: AF-375.

Installation: STC Drawing Lists: AF-375
Drawing D-10476

Parts: Refer to P/N 42-0341 and respective drawings as listed on STC Drawing List AF-375.

The aft pocket door dividers are complete units that contain a frangible door that extends into the cabin aisle, thus closing off the aft compartment of the fuselage. The Avfab aft pocket door divider installation is complete in the same manner and at the same location as the OEM divider. Brackets attach the dividers to the floor board and along the sidewall. A headers is installed over the aisle between the dividers.

**Aviation Fabricators
805 North Fourth Street
Clinton MO 64735**

Document No: AF-620
Revision: (IR)
Date: October 21, 2015

Design Change Control

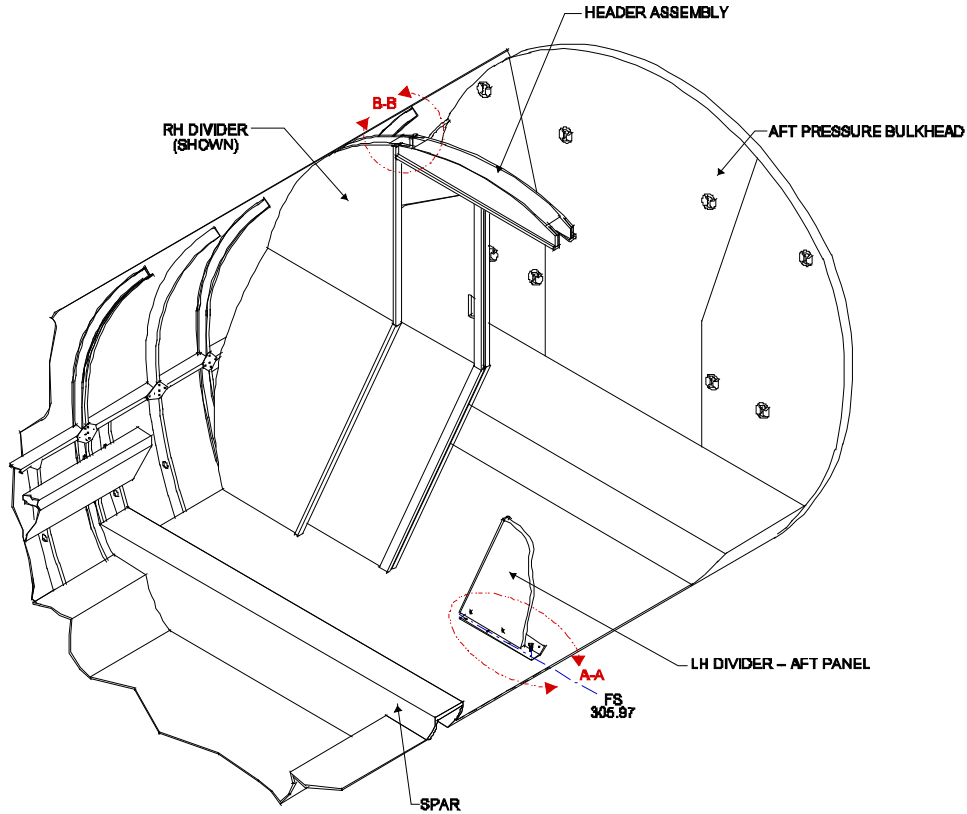
All data and changes to the parts and assemblies will be tracked per STC Drawing List AF-375 Rev J or later approved revision.

Applicable Aircraft

Cessna 550 Aircraft serial #'s 0002 thru 0505

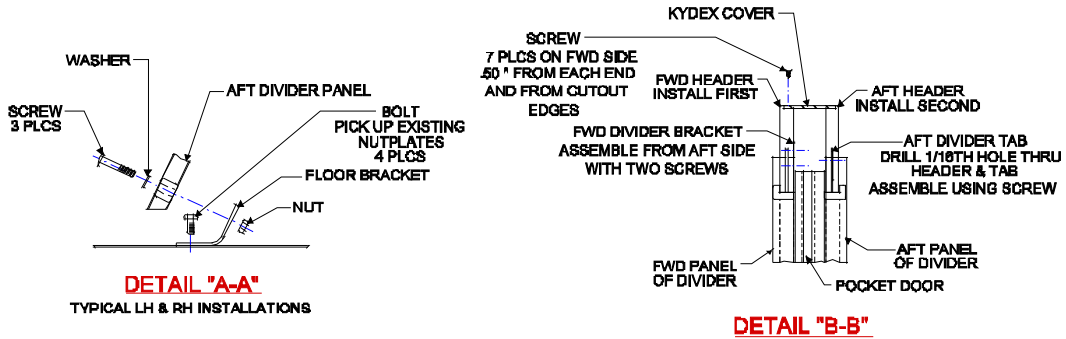
Aft Pocket Door Divider Installation

P/N 42-0341K



AFT POCKET DOOR DIVIDER INSTALLATION

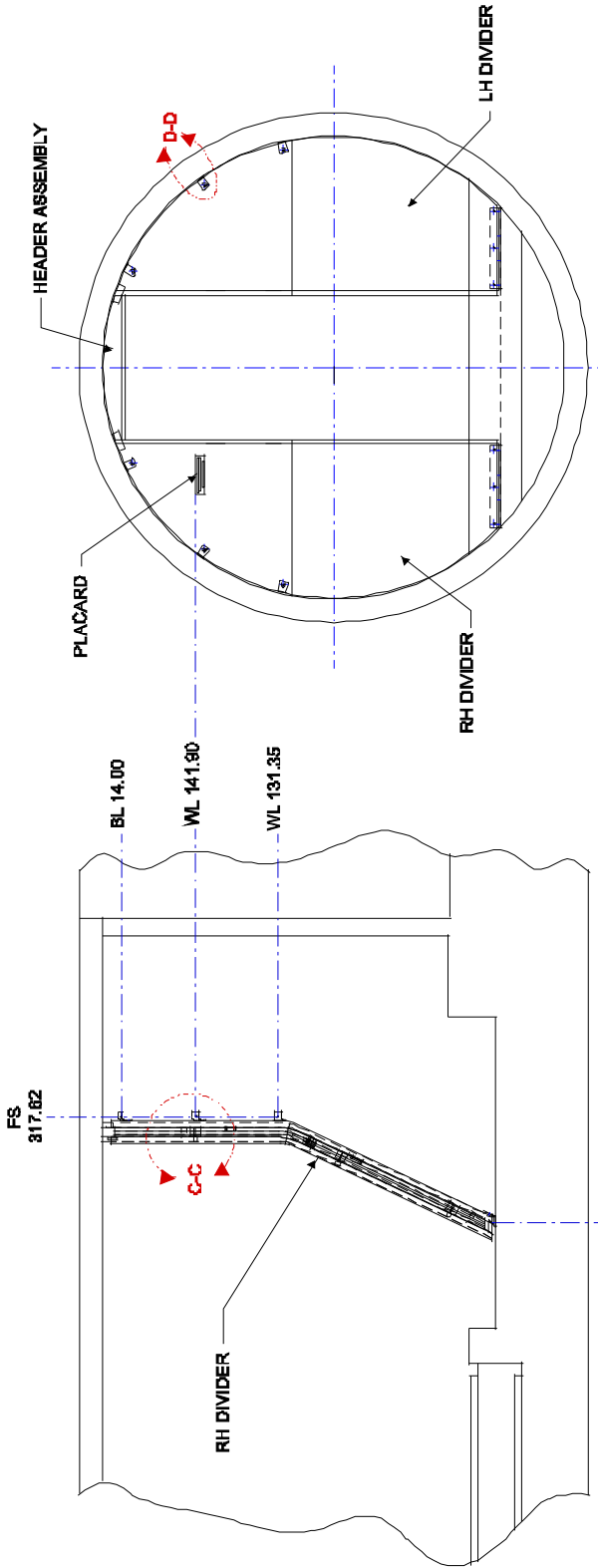
P/N 42-0341K



DETAIL "A-A"

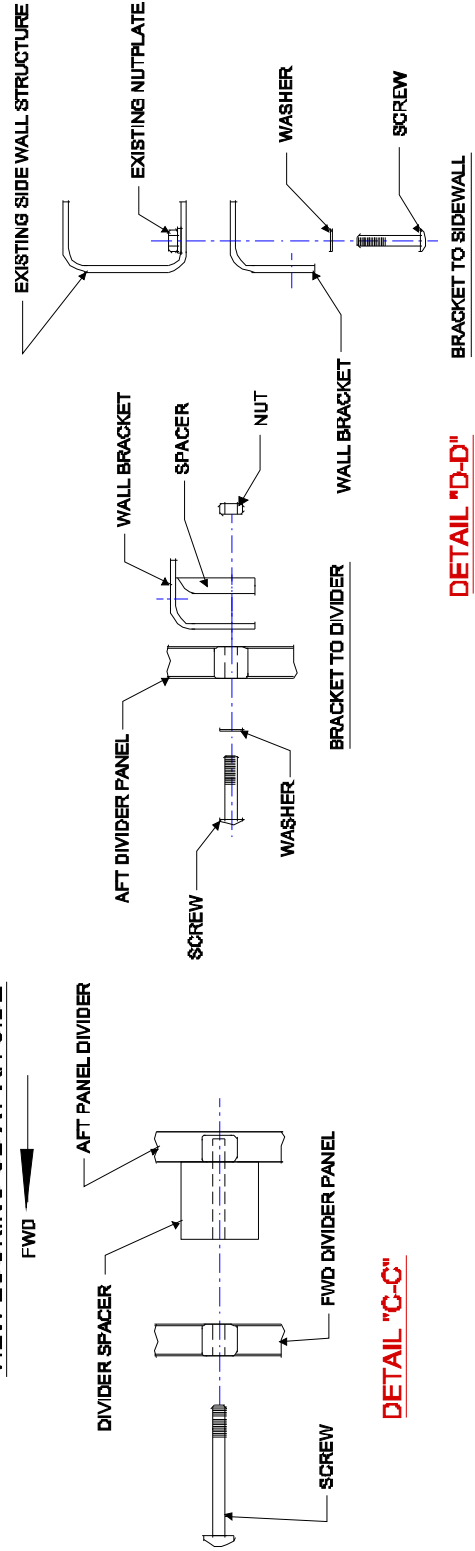
TYPICAL LH & RH INSTALLATIONS

DETAIL "B-B"



FRONT VIEW LOOKING AFT

VIEW LOOKING OB AT RH SIDE



BRACKET TO SIDEWALL

DETAIL "D-D"

DETAIL "C-C"

2.0 INSPECTION REQUIREMENTS AND OVERHAUL SCHEDULE

1. To comply with 14 CFR 23.1529, continue the aft pocket door divider installation on the same inspection and maintenance schedule used per the applicable Cessna Maintenance Manual.
 - a. The new aft pocket door divider installation requires no service other than inspection at normal inspection interval of 100 hours or annually.
 - b. Perform a detailed visual inspection of the aft pocket door dividers to detect apparent or obvious defects, deterioration in the form of wear, breaks, or cracks. If deformities are found the aft pocket door dividers must be removed from the aircraft and returned to Aviation Fabricators for repair or replacement.

Annual and/or 100 hour inspection

Task Code			Schedule	Date	Mech	Insp
AFI-100	a.	Inspect for damage to attaching points for cracks or breaks.				
AFI-101	b.	Inspect pocket doors for any damage and proper operation.				
AFI-102	c.	Inspect overall divider installation for fit and function.				

3.0 DIMENSION AND ACCESS

No change.

4.0 LIFTING AND SHORING

No change.

5.0 LEVELING AND WEIGHING

Remove OEM Dividers = -20 lbs
Add Avfab Pocket Door Dividers = +40 lbs
(unfinished)

6.0 TOWING AND TAXIING

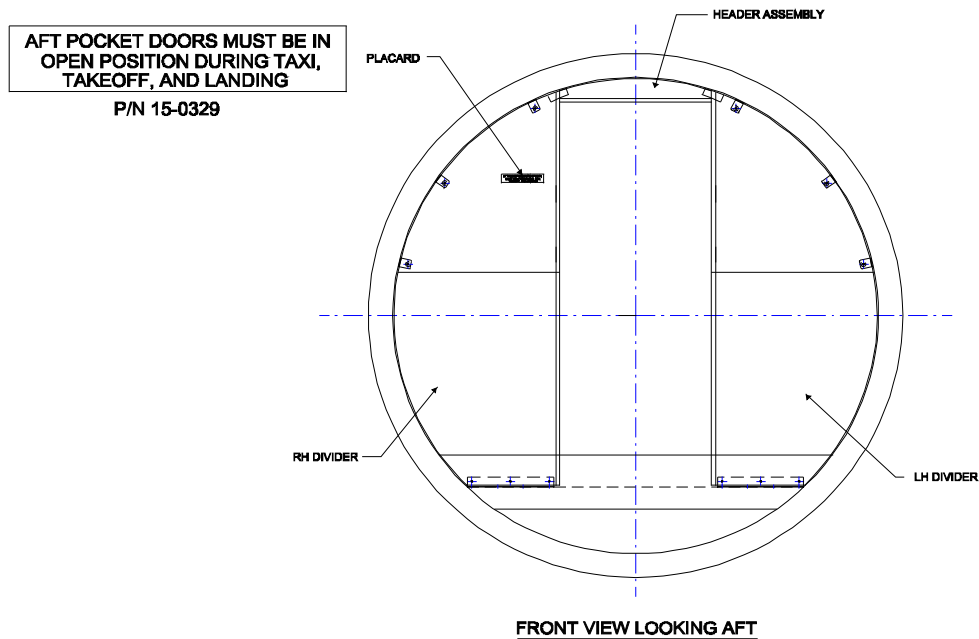
No change.

7.0 PARKING AND MOORING

No change.

8.0 PLACARDS AND MARKINGS

1. Placard P/N 15-0329 must be installed on the forward side of the RH aft divider as shown below.



9.0 SERVICE INFORMATION

Aft Pocket Door Divider Service Instructions:

A. Cleaning:

1. Clean aft pocket door dividers using Armour All multi-purpose cleaner or equivalent.
2. Inspect all attachment fittings and replace if necessary.
3. Inspect overall aft pocket door divider installation for fit and function.

B. Maintenance Instructions:

Divider Removal:

1. Remove wood screws from header assembly. Two on forward panel and one on aft panel. See Detail B-B.
2. Separate the front panel of the divider from the aft panel by removing three screws. See Detail C-C.
3. Remove hardware from attaching floor and sidewall brackets. See Details A-A and D-D.
4. Remove floor and sidewall brackets. See Details A-A and D-D.
5. Aft removing dividers from aircraft reassemble the panel using three screws to maintain assembly during storage. See Detail B-B.

Divider Installation:

1. Separate the front panel of the divider from the aft panel by removing three screws. See Detail C-C.
2. Install floor bracket to existing nutplates aft FS 305.97 using 3 bolts. See Detail A-A.
3. Install side wall brackets to existing nutplates with screws and washers. See Detail D-D.
4. Install aft panel of the divider to the floor and sidewall brackets. See Details A-A and D-D.
5. Reassemble the front panel of the divider to the aft panel.
6. Install the header to the front panel using two wood screws and to the aft header using a wood screw. See Detail B-B.
7. Check assembly for proper function.

C. RECOMMENDED OVERHAUL PERIODS

No additional overhaul time limitations.

10.0 AIRWORTHINESS LIMITATIONS

The Airworthiness Limitations section is FAA approved and specifies maintenance required under Sec. 43.16 and 91.403 of the Federal Aviation Regulations unless an alternative program has been FAA approved.

There are no Airworthiness Limitations to the aircraft with the addition of the window shade assembly installed by this STC.

11.0 TROUBLESHOOTING

Refer to the existing Aircraft Maintenance Manual for troubleshooting the aft pocket door installation that is required beyond the information found on the installation drawing D-10476.

For replacement parts or repair of damage parts contact Aviation Fabricators at (660) 885-8317.

Troubleshooting this installation should only be accomplished by FAA approved repair stations with the appropriate ratings or appropriately rated operator/individuals, with required test equipment and service data.